
Using HoopWorks with CustomWorks

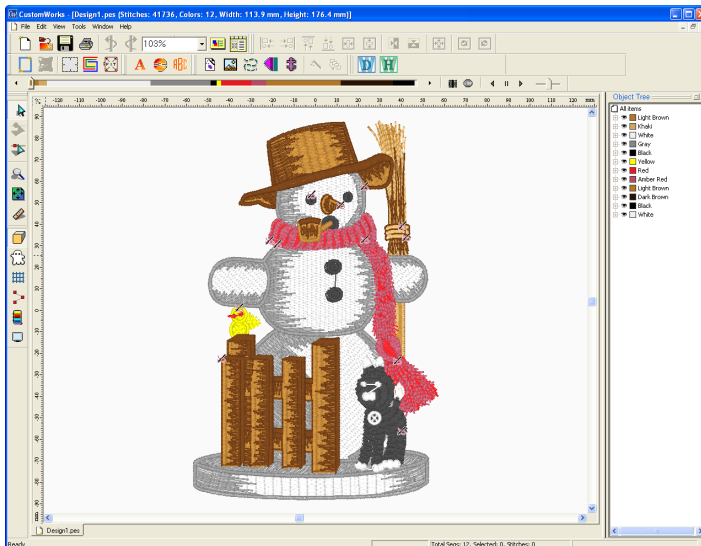
This instructional supplement is to guide users of HoopWorks in the use of that program, being launched from CustomWorks. In the past, Studio was the only program that could launch HoopWorks, but now CustomWorks can launch it also. Because of the different natures of the two programs, Studio and CustomWorks, their behavior is a little different when it comes to handling split files returned from HoopWorks.

This document will walk you through the process of splitting a design that's on a design page in CustomWorks.

Note:

HoopWorks does not automatically come with CustomWorks; each product is sold separately, unless packaged together in a promotional bundle.

Step 1.) Open CustomWorks and load a design that you would like to split. For more information on CustomWorks, see the CustomWorks manual or Help system.



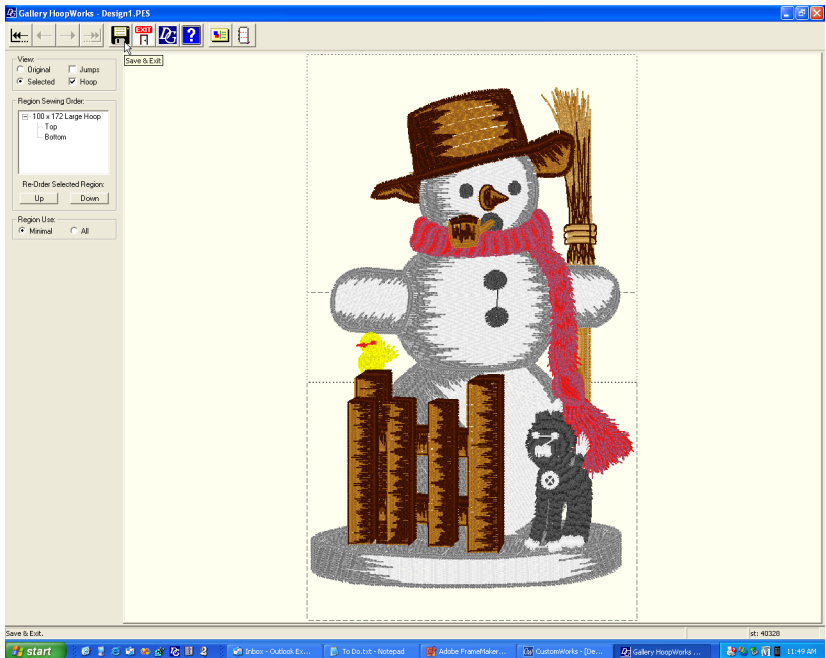
Using HoopWorks with CustomWorks



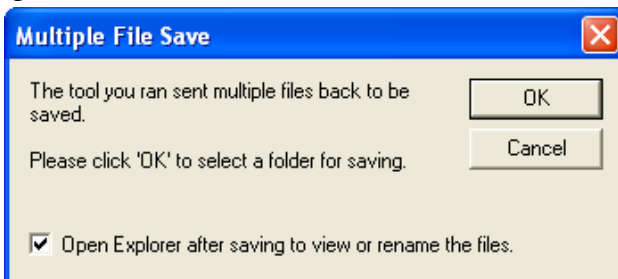
Step 2.) Click on the HoopWorks button, located on the Studio Toolbar.

Step 3.) Split the file as needed in HoopWorks by selecting your hoop, if necessary. For more information on using HoopWorks, please see the HoopWorks manual or Help.

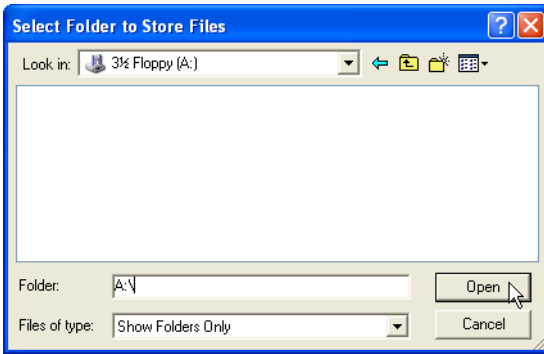
Step 4.) In HoopWorks, click the Save button, as usual.



Step 5.) HoopWorks will now close and you will see the following window:



This window is telling you that HoopWorks sent back the split files to CustomWorks. It's also saying that you are about to be presented a window to let you pick a folder. The folder that you pick is where the split design files will be saved. You also have an option here to open a normal Windows Explorer window so that you can see the files after they're saved. Clicking on 'OK' brings up the Windows 'Save As' window. The window that you actually see might be slightly different depending on your operating system. These pictures were taken using Windows XP. This window, which is common in most Windows programs, allows you to type the full path name of a folder in the 'Folder:' field, or you can navigate through the folder tree on your computer using the 'Look in;' box. If you are unfamiliar with Windows or file systems, it's a good idea to sit down with a computer instructor to get more information about using the PC.

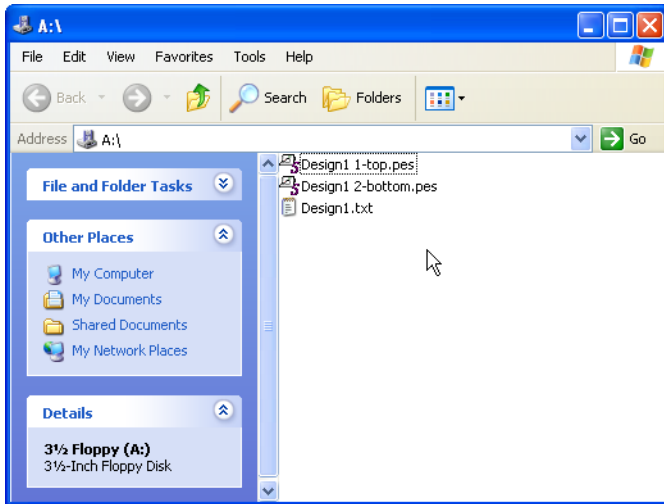


Note:

You will not be able to rename your files in this window. You are only picking a folder to put the designs in. The name of the files correlates to the name of the design page in CustomWorks. HoopWorks also adds sequence information to the names.

Step 6.) If you left the 'Open Explorer...' option checked in step 5, you will now see a Windows Explorer window, in which you can rename or move the files saved by CustomWorks.

Using HoopWorks with CustomWorks



Your designs are now saved and ready to stitch.

If you would like to see the split designs, or print out a template for them, they can be opened back up in CustomWorks. Simply create a new design page in CustomWorks and then Import the designs as needed. For more information on creating a new design page and importing designs, please refer back to the CustomWorks manual or Help system.

